

## **Addendum 2:**

- Project Timeline:
  - Start: May 30th, 2022
  - End: August 4th, 2022
- Bond on project will be required
- Removal of all flooring and cabinets
- Removal of sheetrock column in Toddler room
- Cap all old plumbing not used.
- 15/16 on Legend were wrong on plans. Please note new legend on Addendum Plans
- North side Fire Exit Update: ADA compliant ramp from middle door and far East door, steps for far west door. Slabs across the entire backside of building. Concrete surface approx. 8' wide. No retaining wall necessary. Appropriate slop required. Drainage system along the bottom of the hill and along the building.
- Carpet Tile dimensions added into Addendum Plans.
- Final measurements will need verified by contractor before proceeding with project.
- Cabinet measurements below

### **By Legend Number:**

#### 2. Storage:

- Washer and Dryer will be relocated from existing room 3 to room 2. Update from plans showing in room 8.

#### 4/5/9 Bathrooms:

- Hang (3) new 30" Grainger Plastic bathroom stall partitions in 4 and rehang (3) existing bathroom stall partitions in 5.
- Add handicap rails in preschool bathroom
- Preschool Bathroom updated to 3 toilets – with one being ADA compliant.
- Hang (8) college provided mirrors, (7) toilet paper holders, (5) paper towel holders, and (6) soap dispensers.
- Shelter Reinforcement removed from bid

#### 17/18. Outdoor Play Areas

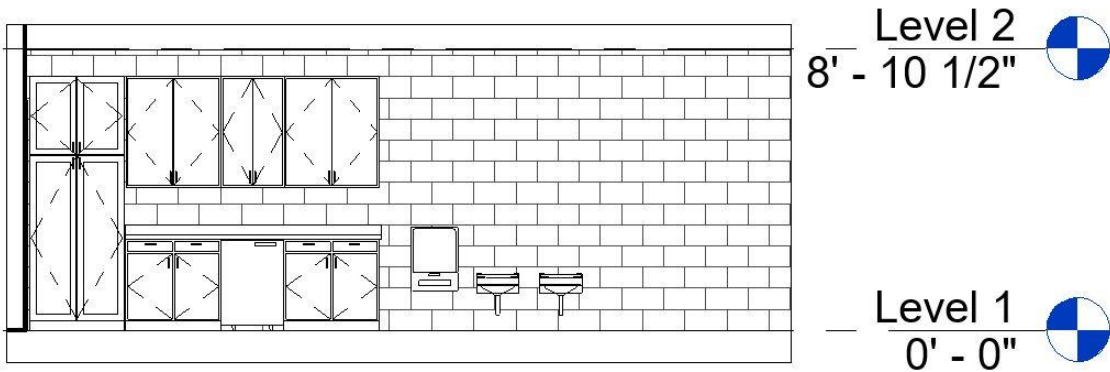
- Fencing gates are double swing
- Outside storage removed from bid

### Cabinet measurements and elevations

- Appropriate finished ends, hinge sides, filler, toe kick, quarter round, moulding, countertop overhang/finishes are the responsibility of contractor to include in bid. Below are measurements for reference.
- Cabinet measurements will need verified before ordering.
- Cabinet Pulls: Mastercraft Satin Nickel 3" or equivalent.

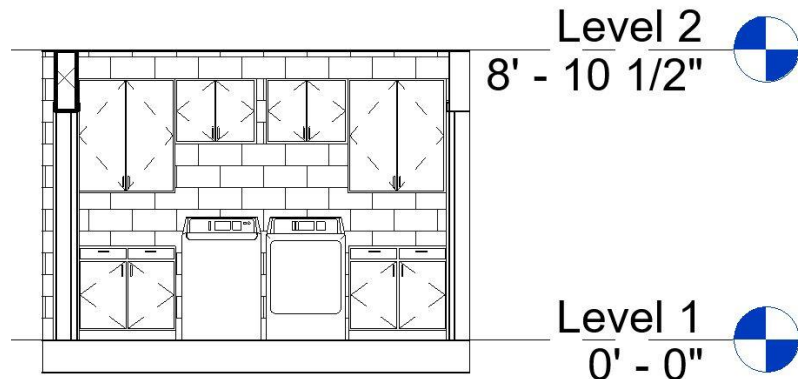
#### 1. Preschool: East Wall

- Tall Cabinet: 36W96H
- Base Cabinets: (2) B36
- Wall Cabinets: (2)36W42H, (1)24W42H



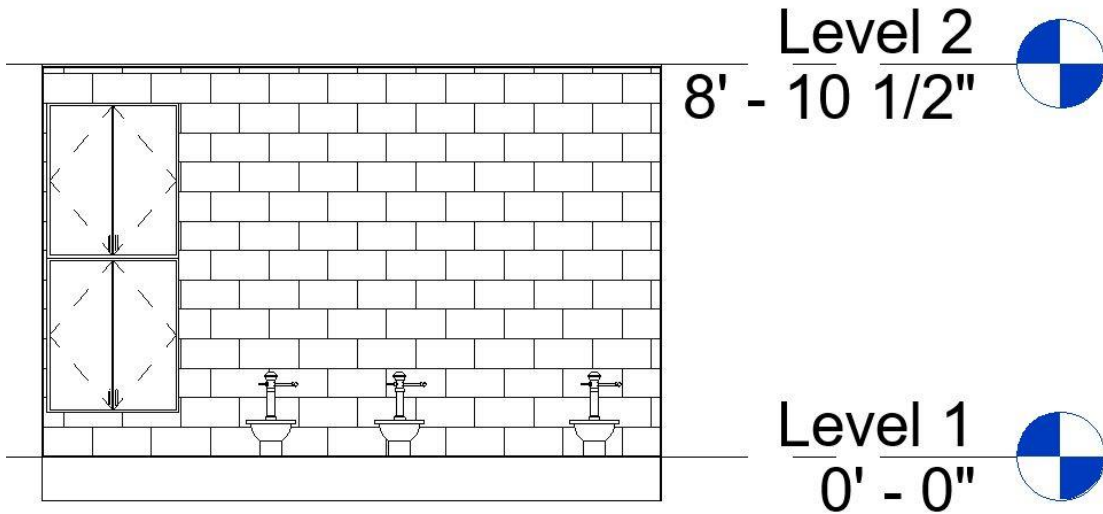
#### 2. Storage: South Wall

- Base Cabinets: (2) B36
- Wall Cabinets: (2) 36W42H, (2) 30W24H
- 3" Filler



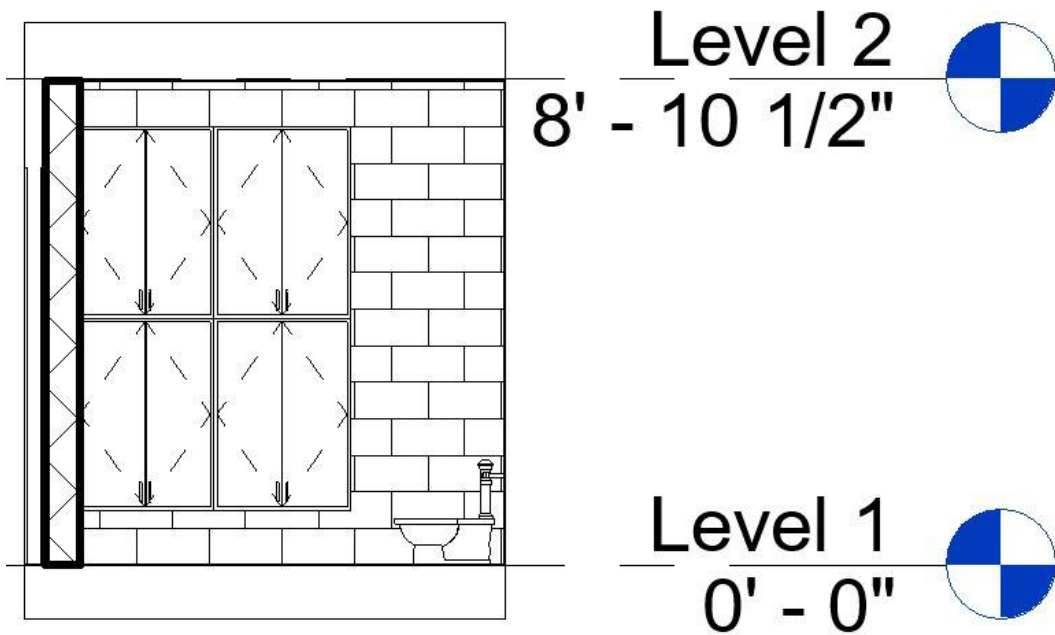
4. Preschool Bathroom: West Wall

- Wall cabinet: (2) 36W42H



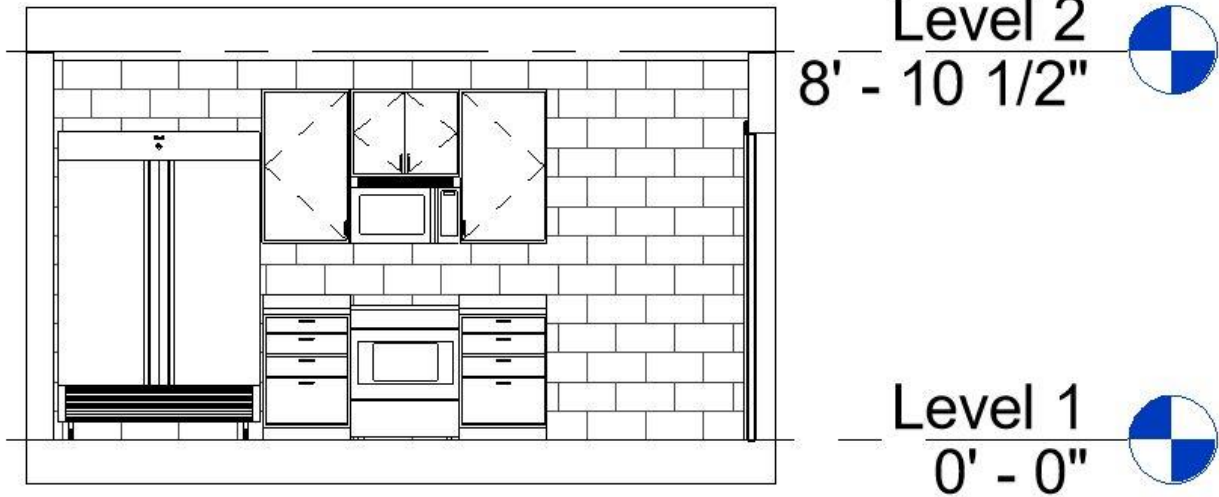
5. Toddler Bathroom: North Wall

- Wall Cabinets: (4) 30W42H



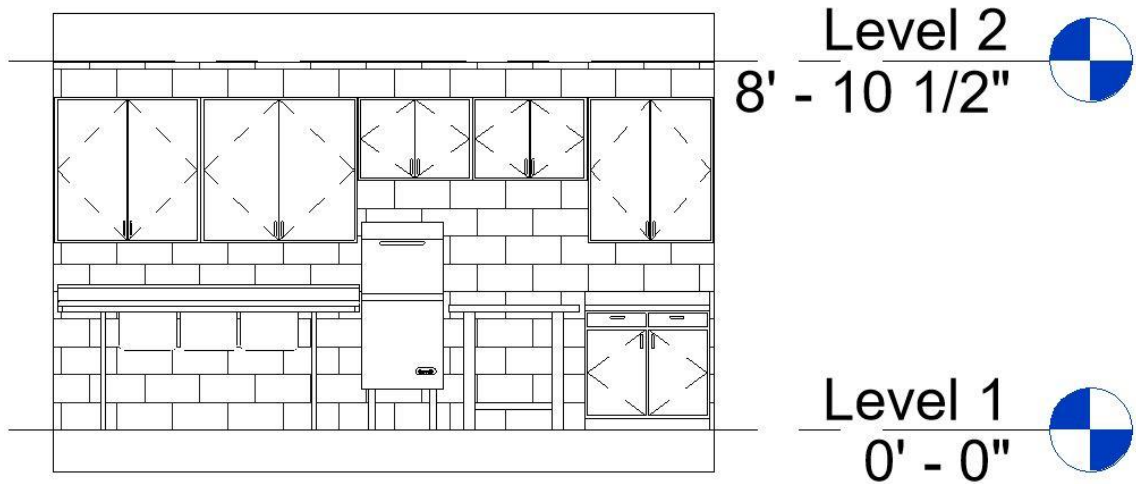
6. Kitchen: East Wall

- Drawer Base Cabinet: (2) DB24
- Wall Cabinet: (2) 24W42H, (1)30W24H



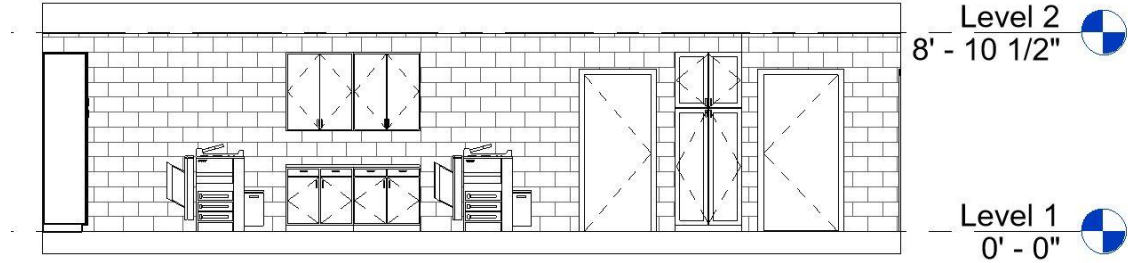
6. Kitchen: West Wall

- Base Cabinet: (1) B36
- Wall Cabinets: (2) 42W42H, (2) 33W24H, (1)36W42H
- 3" Filler



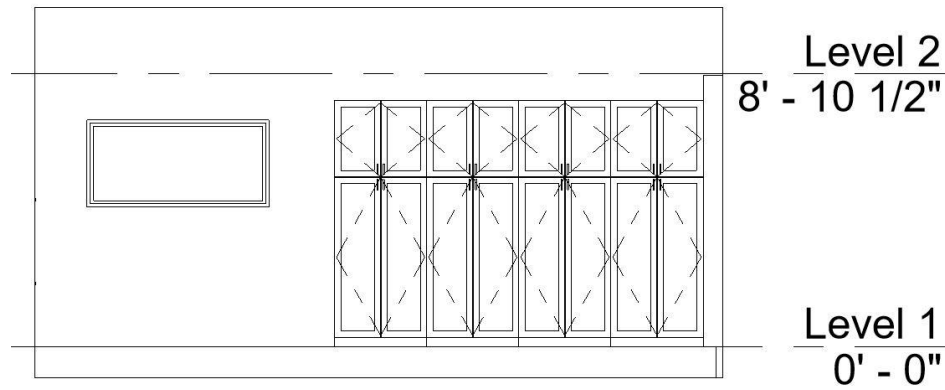
8. Storage/Break Room: North Wall

- Tall Cabinet: (1) 36W96H
- Base Cabinet: (2) B36
- Wall Cabinet: (2) 36W42H



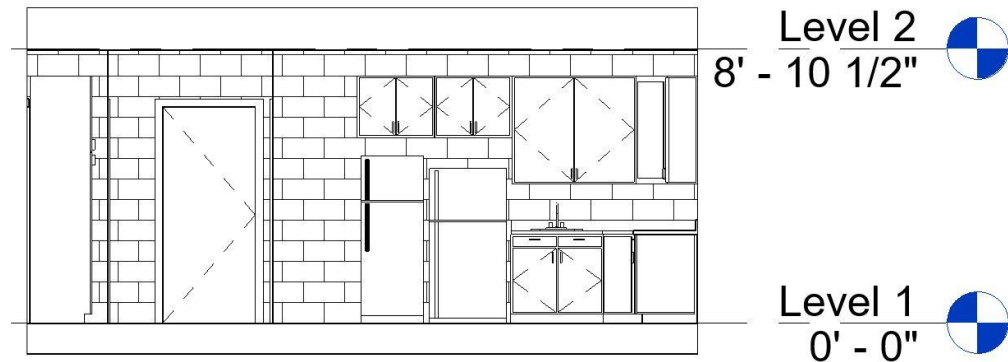
8. Storage/Break Room: West Wall

- Tall Cabinets: (4) 36W96H



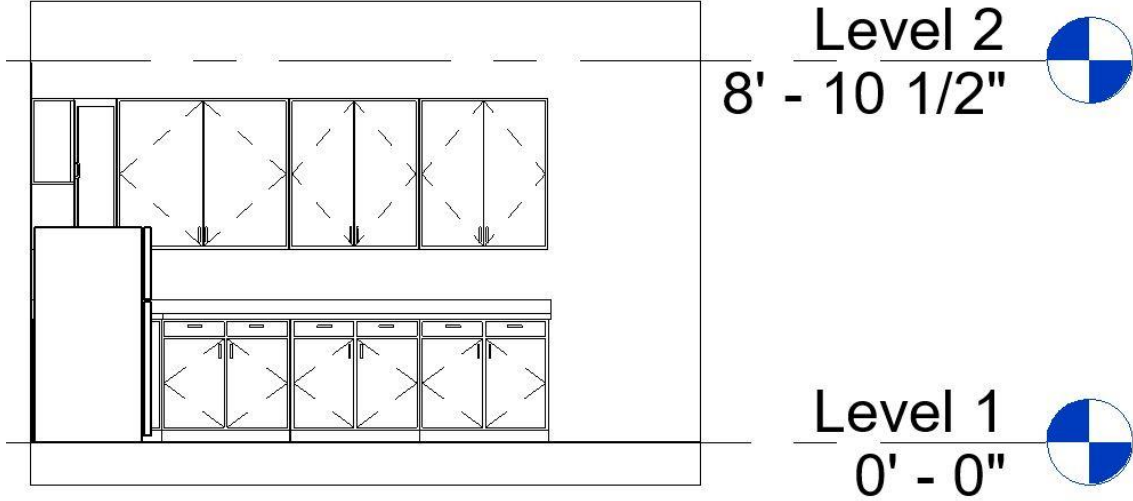
8. Storage/Break Room: East Wall

- Base Corner Cabinet: 36
- Sink Base Cabinet: SB36
- Wall Corner Cabinet: 12D42H
- Wall Cabinet: (1) 48W42H, (2) 30W24H



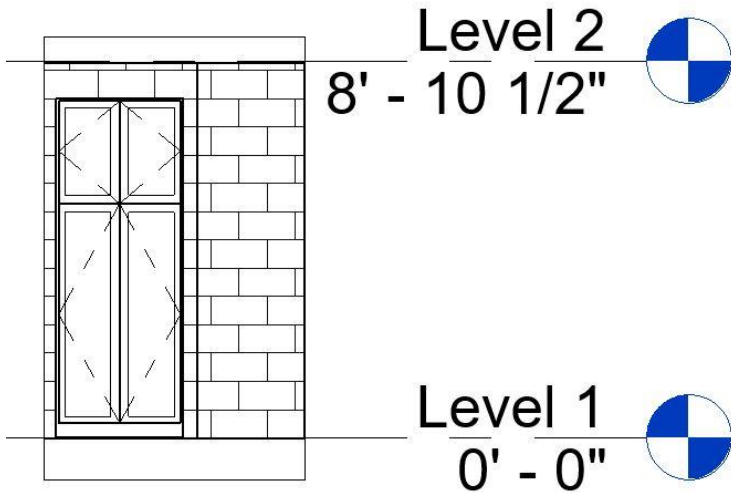
8. Storage/Break Room: South Wall

- Base Cabinet: (3) B36
- Wall Cabinet: (1) 48W42H, (2)36W42H



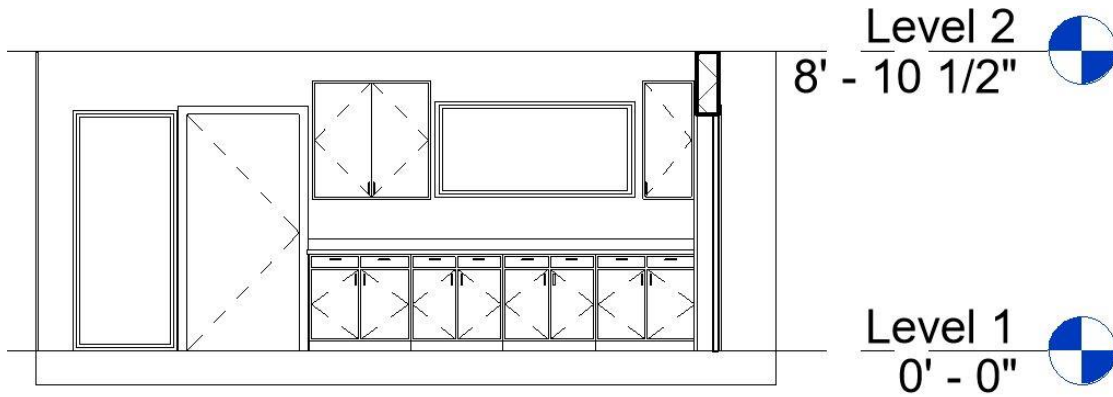
9. Adult Bathroom: East Wall

- Tall Cabinet: 36W96H



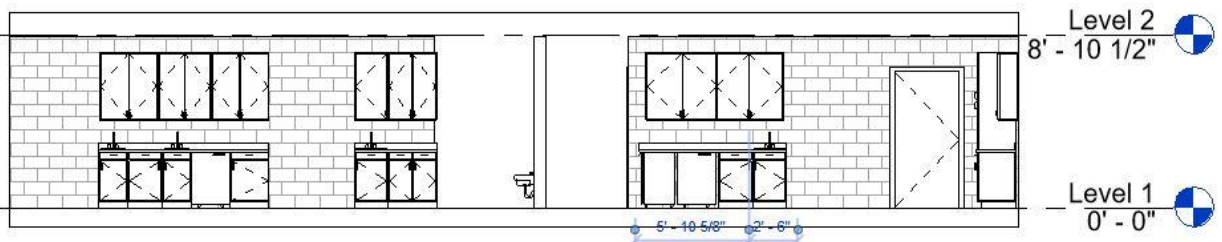
12. Infant Room: South Wall

- Base Cabinet: (4) B36
- Wall Cabinet: (1) 36W42H, (1) 18W42H



12.13.14: Infant/Toddler/Mixed Age North Wall

- Sink Base (2) SB18, (2) SB21
- Base Cabinet: (2) B21, (1) B24, (1) B30
- 2 Dishwasher End Panels
- Wall Cabinets: (2) 36W42H, (1)33W42H, (1)30W42H, (1) 45W42H, (1) 42W42H, (1) 21W42H



14. Mixed Age Room: East Wall

- Tall Cabinet: 36W96H
- Base Cabinet: (3) B36
- Wall Cabinet: (3) 36W42H

